

The WCS-7300 Programmer is designed to give you the ease and convenience of programming the memories and set menu options of your radio from your PC.

**Memory Channels Include:**

- 99 Memory Channels
- 2 Limit Memories (1 pair)
- 33 VFO Channels

**Other Menu Item Categories Include:**

- Set Mode 1
- Set Mode 2
- Set Mode 3

***The Programmer Is for so Much More than Just Memory Management.***

With the WCS-7300 Programmer you can begin a new “factory fresh” file into which frequencies and option settings are entered. Or, you can read from the radio, store these details on your computer and make changes. Then, with minimal button pushing, send the new configuration back to the radio.

The Programmer allows you to create and save as many files as you want for your radio. Files can even be shared between users via email or the Internet.

Managing all the options of this great little radio becomes easy with the Programmer. The cut, copy, paste and insert features of the Programmer make channel management easier than ever.

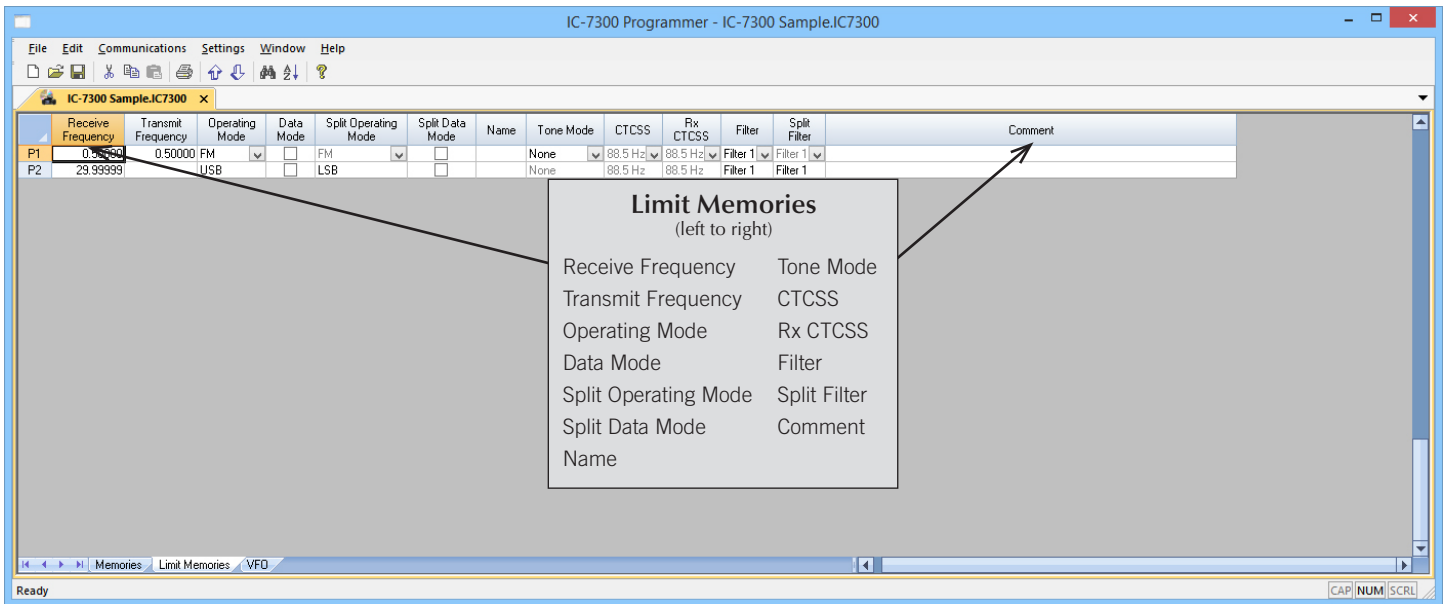
Open more than one file at a time. Memory channel information can be copied from one file to another within the Programmer making it really easy to set up a new file.



**Hardware Requirements:**

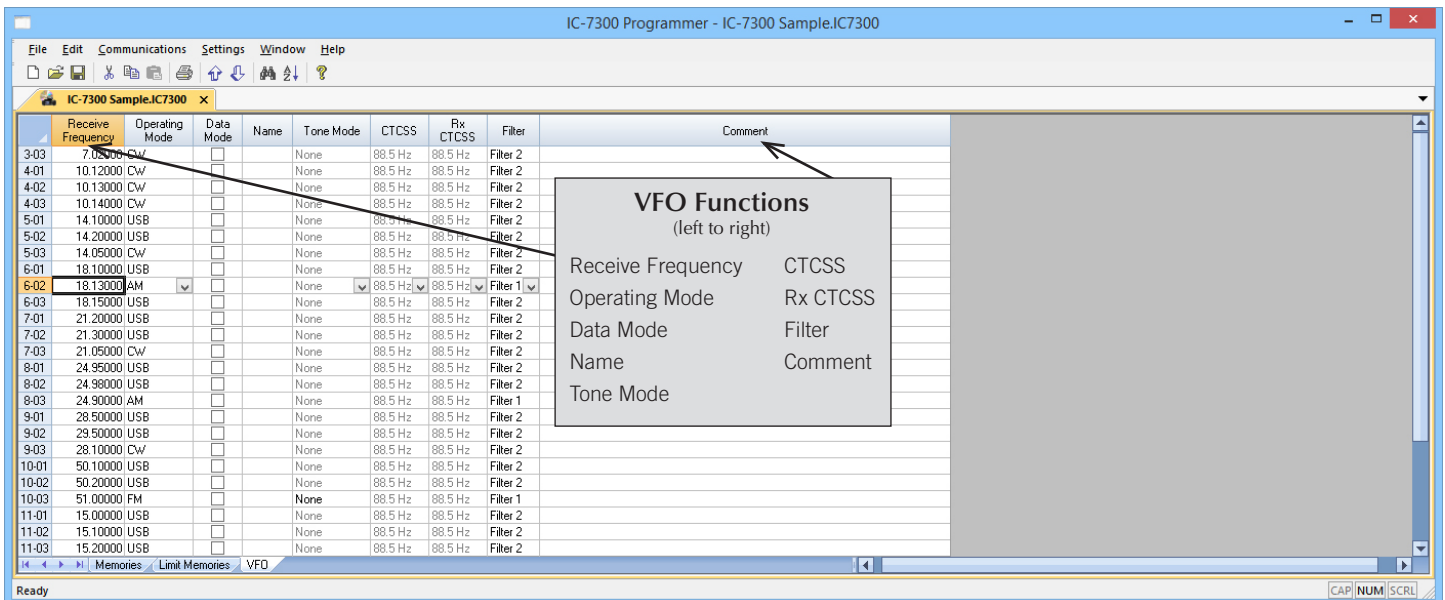
A PC running Windows XP (SP3), Vista, Windows 7 (32 or 64 bit) or Windows 8 or 8.1 (full version), Windows 10. CD drive for installation. Local USB port and RT Systems RT-42 interface cable (10' length). The cable connects the radio to the computer from the USB-B port on the computer to the USB-A port on the radio. Internet connection for software installation.





**Limit Memories**

Limit Memories are used by the radio for Program Scan. Program the same details for Limit Memories as for regular memory channels. Many of the Limit Memories are preprogrammed in the radio and while the frequency can be changed to another within the band, they cannot be left blank.



**VFO**

The program makes available the same VFO's as in the radio (usually one per band). Remember these are not real memory channels since the details are lost as soon as you tune the radio manually. There is no one button recall for these. You do not need to program into VFO before programming details into a memory channel. These channels are preprogrammed in the radio and while the frequency can be changed to another within the band, they cannot be left blank.

Menu Settings for IC-7300 - Untitled.rsf

File Tabs Help  
Set Mode 1 | Set Mode 2 | Set Mode 3

**Function Set Mode**

- Beep Level Limit
- Confirmation Beep
- Calibration Marker
- MF Band Attenuator
- PTT Tune
- Quick RIT Clear
- Quick Split
- Screen Capture (Power)
- Speech Mode Announcement
- Speech S-Level Announcement
- Split Lock
- SSB/CW Sync Tuning
- Tuner Auto-Start

CW Normal Side: LSB

Keyboard Type: Full Keyboard

Lock Function: Main Dial

Memo Pad Channels: 5

Mic Up/Down Speed: High

AM Notch Filter: Auto/Manual

SSB Notch Filter: Auto/Manual

Reference Adjust: 28%

RTTY Keying Polarity: Normal

RTTY Mark Frequency: 2125 Hz

RTTY Shift Width: 170 Hz

RF/SQL Operation: RF+Sq

Screen Capture File Type: PNG

Speech Language: English

Speech Level: 50%

Speech/Lock: Speech/Lock

Speech Speed: Fast

Time Out Timer (CI-V): Off

Tx Delay HF: Off

Tx Delay 50 MHz: Off

Tx Delay 70 MHz: Off

**Tone Control Set Mode**

Bandpass Filter: High

SSB: Off, AM: Off, FM: Off, CW: Off, RTTY: Off

Tone Control: Bass, Treble

SSB Rx: 0, SSB Tx: 0, AM Rx: 0, AM Tx: 0, FM Rx: 0, FM Tx: 0

SSB Tx Bandwidth: Wide (100 Hz), Mid (300 Hz), Nar (500 Hz)

**Connectors Set Mode**

- ACC/USB AF Squelch
- ACC/USB AF Beep/Speech
- External Keypad (Voice)
- External Keypad (Keyer)
- External Keypad (RTTY)

ACC/USB Output Select: AF

RTTY Decode Baud Rate: 9600 bps

ACC/USB AF Out Level: 50%

USB Modulation Level: 50%

ACC/USB IF Out Level: 50%

USB Send: Off

ACC Modulation Level: 50%

USB Keying (CW): Off

Data Off Modulation: Mic+ACC

USB Keying (RTTY): Off

Data Modulation: ACC

### Set Mode 1, 2 and 3

Use these screens to customize other set menu features of the radio. Check boxes toggle features on or off, drop down menus list all selections and blank boxes for personalized entry add to the ease of setting up your radio exactly like you want it.

The entries on the Settings screens are made for you to "Set and Forget". Once settings are customized, you are prompted to save before exiting. The saved settings will be there every time you create a new frequency file.

Menu Settings for IC-7300 - Untitled.rsf

File Tabs Help  
Set Mode 1 | Set Mode 2 | Set Mode 3

**Display Set Mode**

- BW PopUp (FIL)
- BW PopUp (PBT)
- MN Width PopUp
- Meter Peak Hold
- Show Memory Name
- Power On Check
- Power On Message

Display Type: A (Black)

Display Font: Basic

LCD Brightness: 50%

Display Language: English

Screen Saver: 60 minutes

Power On Message: [ ]

**Scan Set Mode**

- Scan Resume
- Scan Speed: High
- Time Set Mode: UTC Offset
- UTC Offset: 00.00

**NB Set Mode**

- Level: 50%
- Depth: 8
- Width: 50

**Voice Tx Set Mode**

- Auto Monitor
- Repeat Time: 5 seconds

**VDX Set Mode**

- Delay: 0.2 seconds
- Voice Delay: Off
- Gain: 50%
- Anti-Gain: 50%

**Scope Set Mode**

- Scope During Tx
- Max Hold
- Waterfall Display
- Waterfall Marker Auto-Hide

Averaging: Off

Center Type Display: Filter

Marker Position: Carrier Point

Video Bandwidth: Narrow

Waterfall Type: Fill

Waterfall Speed: Mid

Waterfall Size: Mid

Waterfall Peak Color: Grid 8

FFT Waveform Type: Fill

FFT Waterfall Display:

Wavelength Color (Current): [ ]

Wavelength Color (Line): [ ]

Wavelength Color (Max Hold): [ ]

FFT Waveform Color: [ ]

Oscilloscope Waveform Color: [ ]

**Fixed Edges**

	Default 1		Default 2		Default 3	
	Lower [kHz]	Upper [kHz]	Lower [kHz]	Upper [kHz]	Lower [kHz]	Upper [kHz]
0.03 - 1.60 MHz	500	1500	500	1500	500	1500
1.60 - 2.00 MHz	1800	2000	1800	1830	1900	1930
2.00 - 6.00 MHz	3500	4000	3500	3575	3750	3850
6.00 - 8.00 MHz	7000	7300	7000	7030	7030	7200
8.00 - 11.00 MHz	10100	10150	10100	10130	10130	10150
11.00 - 15.00 MHz	14000	14350	14000	14100	14100	14350
15.00 - 20.00 MHz	18050	18150	18050	18110	18110	18150
20.00 - 22.00 MHz	21000	21450	21000	21150	21150	21450
22.00 - 26.00 MHz	24890	24990	24890	24930	24930	24990
26.00 - 30.00 MHz	28000	29000	28000	28200	28200	29000
30.00 - 45.00 MHz	30000	31000	30000	31000	30000	31000
45.00 - 60.00 MHz	50000	51000	50000	50100	50100	50300
60.00 - 74.80 MHz	70000	70500	70000	70250	70250	70500

Menu Settings for IC-7300 - Untitled.rsf

File Tabs Help  
Set Mode 1 | Set Mode 2 | Set Mode 3

**Keyer Set Mode**

- Dot/Dash Ratio: 1.1:3.0
- Keyer Repeat Time: 2 seconds
- Keyer Type: Elec-Key
- Side Tone Level: 50%
- Paddle Polarity: Normal
- Rise Time: 4 ms
- Mic Up/Down Keyer:
- Sidetone Level Limit:

**Contest Number Set Mode**

- Count Up Trigger: M2
- Present Number: 0001
- Number Style: Normal

**Keyer Memory**

Key	Memory
M1	CQ TEST CQ TEST DE ICOM ICOM TEST
M2	UR 5NN BK

**RTTY Decode Set Mode**

- Decode New Line: CR,LF,CR+LF
- FFT Scope Averaging: Off
- Time Stamp (Time): Local
- Log File Type: Text
- Decode USOS
- Tx USOS
- Time Stamp
- Time Stamp (Frequency)
- Log Function

FFT Scope Waveform Color: [ ]

Font Color (Receive): [ ]

Font Color (Transmit): [ ]

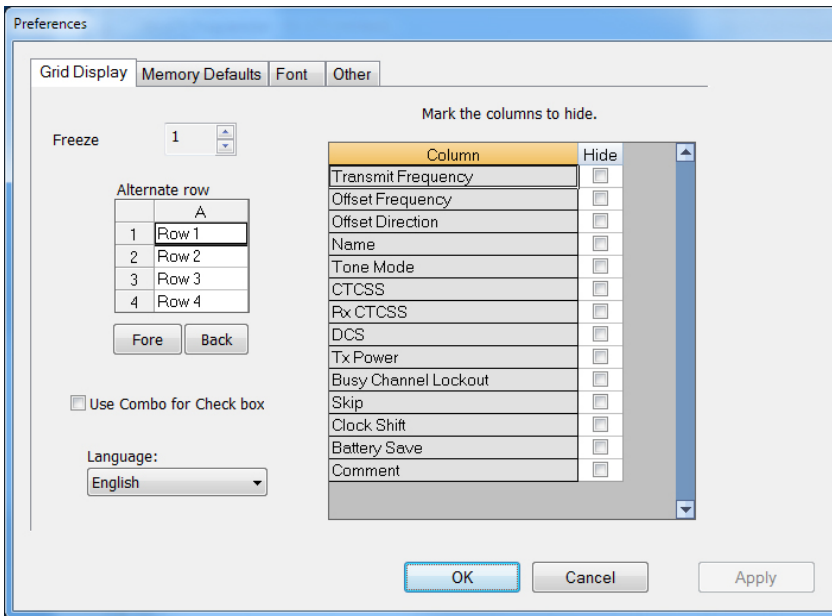
**Recorder Set Mode**

- Record Mode: Tx & Rx
- Tx Record Audio: Mic Audio
- Rx Record Condition: Squelch Auto
- PTT Pre-Record: 10 seconds
- Player Skip Time: 10 seconds
- File Split
- PTT Auto Record

**User Band Edge**

	Lower	Upper
1	1.800000	1.999999
2	3.500000	3.999999
3	7.000000	7.300000
4	10.100000	10.150000
5	14.000000	14.350000

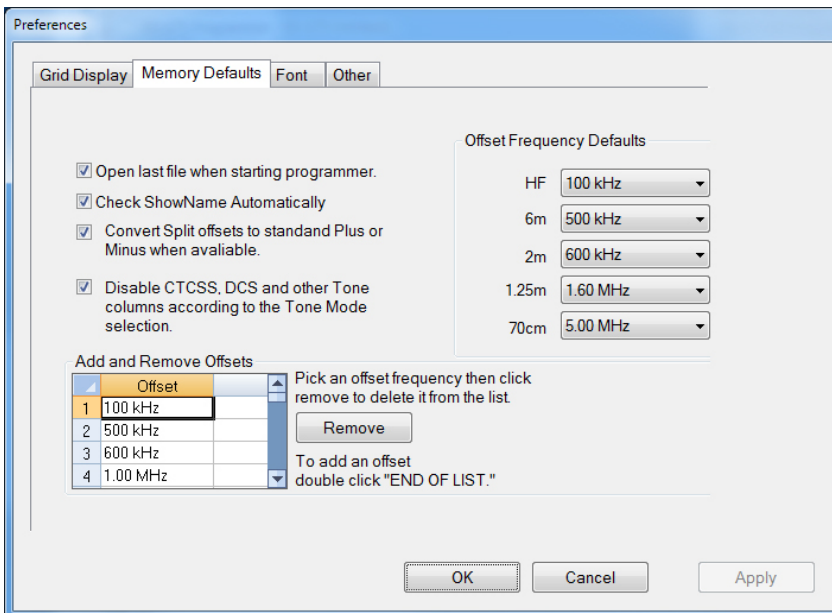
Insert Delete



## Preferences Customize the Programmer

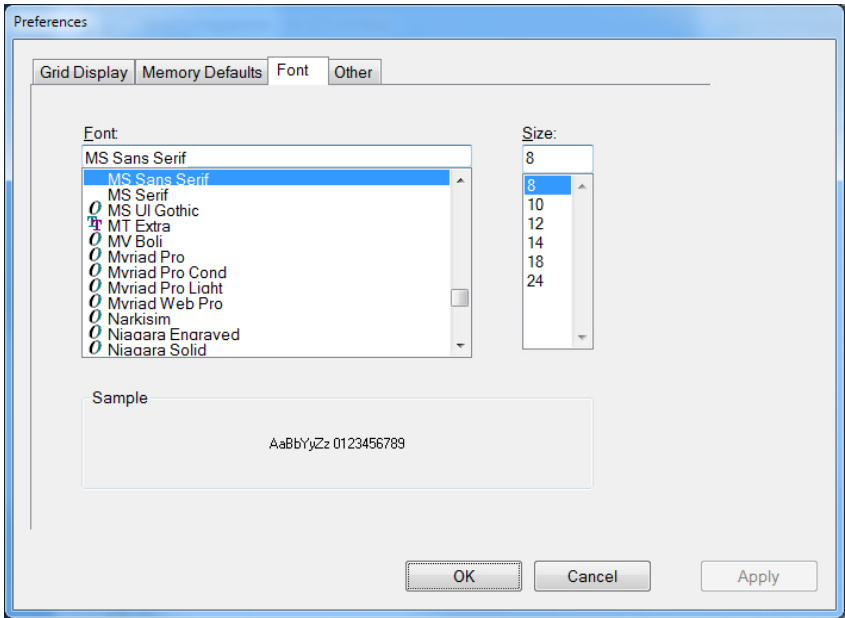
### Grid Display

- RT Systems now available in English, French, German, Italian, Spanish, Portuguese and Japanese.
- Set colors for text (Fore) or background (Back) of alternate rows for easier viewing across the columns.
- Freeze columns to keep information on the screen as you scroll to the right of the page.
- Hide columns you don't use. Customize your print-out: hidden columns do not print.
- Use Combo for Check boxes – changes the grid to eliminate check box selections that are disabled on some systems.



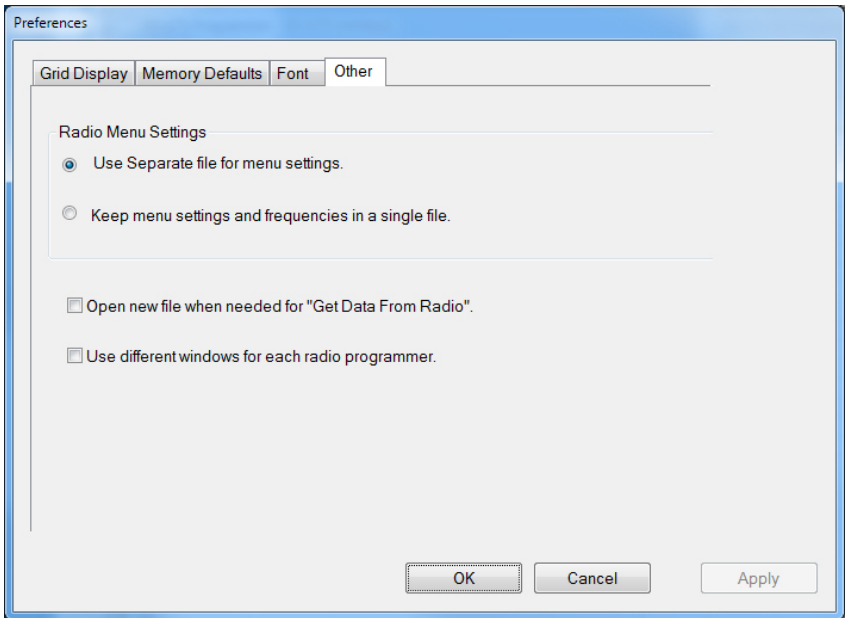
### Memory Defaults

- Set options to control auto fill information for memory channel entries.



**Font**

- Set options to control the font in the column headers of the channel entry screens. Select any font and font size available on your computer.



**Other**

- Set options to control how the programmer handles the global Radio Menu Settings file.
  - Separate (default) handles the global settings of the radio in a “set and forget” fashion. Once you set these up and save the file you won’t have to reset them for a new frequency file.
  - “Single file” gives you the ability to create files that are complete with frequencies and customized global settings. In this mode, each file begins with factory defaults for every option of the radio.
- Check “Get data from Radio” new file option to prevent data loss when you read from your radio into the programmer.
- Check “different window” option to make the programmer for a different radio run in completely separate window rather than in a separate tab of the same window.

**Buy Now**